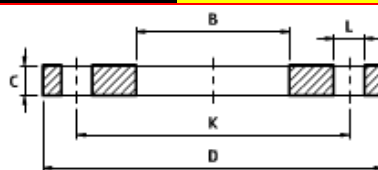




# RM Alkon Stahl

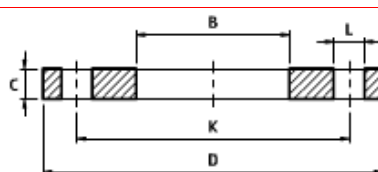
Stevana Brakusa 4, 11030 Beograd - tel.7540-847 \* fax.3055-488  
 e-mail: office@rmalkon.co.rs \* www.rmalkon.co.rs

## Prirubnice po EN 1092-1/01 type A , Ravne bez pripreme za zavar (DIN 2576)



EN 1092-1/01 type A PN 6

| DN  | Ø ISO | D   | K   | L  | Broj rupa | Vijci | B ISO | C  |
|-----|-------|-----|-----|----|-----------|-------|-------|----|
| 10  | 17.2  | 75  | 50  | 11 | 4         | M10   | 18    | 12 |
| 15  | 21.3  | 80  | 55  | 11 | 4         | M10   | 22    | 12 |
| 20  | 26.9  | 90  | 65  | 11 | 4         | M10   | 27.5  | 14 |
| 25  | 33.7  | 100 | 75  | 11 | 4         | M10   | 34.5  | 14 |
| 32  | 42.4  | 120 | 90  | 14 | 4         | M12   | 43.5  | 16 |
| 40  | 48.3  | 130 | 100 | 14 | 4         | M12   | 49.5  | 16 |
| 50  | 60.3  | 140 | 110 | 14 | 4         | M12   | 61.5  | 16 |
| 65  | 76.1  | 160 | 130 | 14 | 4         | M12   | 77.5  | 16 |
| 80  | 88.9  | 190 | 150 | 18 | 4         | M16   | 90.5  | 18 |
| 100 | 114.3 | 210 | 170 | 18 | 4         | M16   | 116   | 18 |
| 125 | 139.7 | 240 | 200 | 18 | 8         | M16   | 141.5 | 20 |
| 150 | 168.3 | 265 | 225 | 18 | 8         | M16   | 170.5 | 20 |
| 200 | 219.1 | 320 | 280 | 18 | 8         | M16   | 221.5 | 22 |
| 250 | 273   | 375 | 335 | 18 | 12        | M16   | 276.5 | 24 |
| 300 | 323.9 | 440 | 395 | 22 | 12        | M20   | 327.5 | 24 |
| 350 | 355.6 | 490 | 445 | 22 | 12        | M20   | 359.5 | 26 |
| 400 | 406.4 | 540 | 495 | 22 | 16        | M20   | 411   | 28 |
| 450 | 457   | 595 | 550 | 22 | 16        | M20   | 462   | 30 |
| 500 | 508   | 645 | 600 | 22 | 20        | M20   | 513.5 | 30 |



EN 1092-1/01 type A PN 10


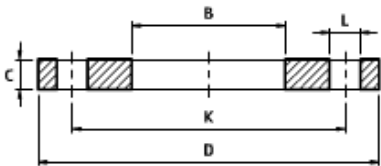
| DN     | Ø ISO  | D   | K   | L  | Broj rupa | Vijci | B ISO | C  |
|--------|--|-----|-----|----|-----------|-------|-------|----|
| 10÷40  | Koristi EN 1092-1/01 type A PN 40 prirubnice |     |     |    |           |       |       |    |
| 50÷150 | Koristi EN 1092-1/01 type A PN 16 prirubnice |     |     |    |           |       |       |    |
| 200    | 219.1  | 340 | 295 | 22 | 8         | M20   | 221.5 | 24 |
| 250    | 273  | 395 | 350 | 22 | 12        | M20   | 276.5 | 26 |
| 300    | 323.9  | 445 | 400 | 22 | 12        | M20   | 327.5 | 26 |
| 350    | 355.6  | 505 | 460 | 22 | 16        | M20   | 359.5 | 28 |
| 400    | 406.4  | 565 | 515 | 26 | 16        | M24   | 411   | 32 |
| 450    | 457  | 615 | 565 | 26 | 20        | M24   | 462   | 36 |
| 500    | 508  | 670 | 620 | 26 | 20        | M24   | 513.5 | 38 |
| 600    | 610  | 780 | 725 | 30 | 20        | M27   | 616.5 | 42 |


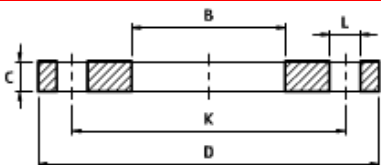


# RM Alkon Stahl

Stevana Brakusa 4, 11030 Beograd - tel.7540-847 \* fax.3055-488

e-mail: office@rmalkon.co.rs \* www.rmalkon.co.rs

|  |  |     |     |    |           |       |       |    |  |
|---|--|-----|-----|----|-----------|-------|-------|----|--|
| <b>Flange piane a saldare - EN 1092-1/01 type A PN 16</b>                         |  |     |     |    |           |       |       |    |  |
| DN  | Ø ISO  | D   | K   | L  | Broj rupa | Vijci | B ISO | C  |  |
| 10 ÷ 40   | Koristi EN 1092-1/01 type A PN 40 prirubnice |     |     |    |           |       |       |    |  |
| 50  | 60.3   | 165 | 125 | 18 | 4         | M16   | 61.5  | 19 |  |
| 65  | 76.1   | 185 | 145 | 18 | 8         | M16   | 77.5  | 20 |  |
| 80  | 88.9   | 200 | 160 | 18 | 8         | M16   | 90.5  | 20 |  |
| 100   | 114.3  | 220 | 180 | 18 | 8         | M16   | 116   | 22 |  |
| 125   | 139.7  | 250 | 210 | 18 | 8         | M16   | 141.5 | 22 |  |
| 150   | 168.3  | 285 | 240 | 22 | 8         | M20   | 170.5 | 24 |  |
| 200   | 219.1  | 340 | 295 | 22 | 12        | M20   | 221.5 | 26 |  |
| 250   | 273  | 405 | 355 | 26 | 12        | M24   | 276.5 | 29 |  |
| 300   | 323.9  | 460 | 410 | 26 | 12        | M24   | 327.5 | 32 |  |
| 350   | 355.6  | 520 | 470 | 26 | 16        | M24   | 359   | 35 |  |
| 400   | 406.4  | 580 | 525 | 30 | 16        | M27   | 411   | 38 |  |
| 450   | 457  | 640 | 585 | 30 | 20        | M27   | 462   | 42 |  |
| 500   | 508  | 715 | 650 | 33 | 20        | M30   | 513.5 | 46 |  |
| 600   | 610  | 840 | 770 | 36 | 20        | M33   | 616.5 | 52 |  |

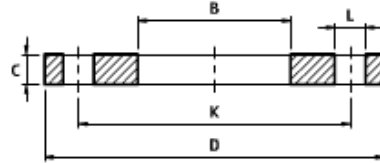
|  |  |     |     |    |           |       |       |    |  |
|---|--|-----|-----|----|-----------|-------|-------|----|--|
| <b>Flange piane a saldare - EN 1092-1/01 type A PN 25</b>                           |  |     |     |    |           |       |       |    |  |
| DN  | Ø ISO  | D   | K   | L  | Broj rupa | Vijci | B ISO | C  |  |
| 10 ÷ 150  | Koristi EN 1092-1/01 type A PN 40 prirubnice |     |     |    |           |       |       |    |  |
| 200   | 219.1  | 360 | 310 | 26 | 12        | M24   | 221.5 | 32 |  |
| 250   | 273  | 425 | 370 | 30 | 12        | M27   | 276.5 | 35 |  |
| 300   | 323.9  | 485 | 430 | 30 | 16        | M27   | 327.5 | 38 |  |
| 350   | 355.6  | 555 | 490 | 33 | 16        | M30   | 359.5 | 42 |  |
| 400   | 406.4  | 620 | 550 | 36 | 16        | M33   | 411   | 46 |  |
| 450   | 457  | 670 | 600 | 36 | 20        | M33   | 462   | 50 |  |
| 500   | 508  | 730 | 660 | 36 | 20        | M33   | 513.5 | 56 |  |
| 600   | 610  | 845 | 770 | 39 | 20        | M36   | 616.5 | 68 |  |



# RM Alkon Stahl

Stevana Brakusa 4, 11030 Beograd - tel.7540-847 \* fax.3055-488

e-mail: office@rmalkon.co.rs \* www.rmalkon.co.rs



EN 1092-1/01 type A PN 40

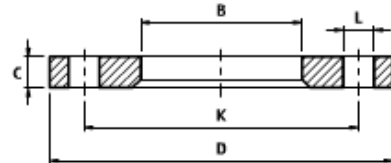
| DN  | Ø ISO | D   | K   | L  | Broj rupa | Vijci | B ISO | C  |
|-----|-------|-----|-----|----|-----------|-------|-------|----|
| 10  | 17.2  | 90  | 60  | 14 | 4         | M12   | 18    | 14 |
| 15  | 21.3  | 95  | 65  | 14 | 4         | M12   | 22    | 14 |
| 20  | 26.9  | 105 | 75  | 14 | 4         | M12   | 27.5  | 16 |
| 25  | 33.7  | 115 | 85  | 14 | 4         | M12   | 34.5  | 16 |
| 32  | 42.4  | 140 | 100 | 18 | 4         | M16   | 43.5  | 18 |
| 40  | 48.3  | 150 | 110 | 18 | 4         | M16   | 49.5  | 18 |
| 50  | 60.3  | 165 | 125 | 18 | 4         | M16   | 61.5  | 20 |
| 65  | 76.1  | 185 | 145 | 18 | 8         | M16   | 77.5  | 22 |
| 80  | 88.9  | 200 | 160 | 18 | 8         | M16   | 90.5  | 24 |
| 100 | 114.3 | 235 | 190 | 22 | 8         | M20   | 116   | 26 |
| 125 | 139.7 | 270 | 220 | 26 | 8         | M24   | 141.5 | 28 |
| 150 | 168.3 | 300 | 250 | 26 | 8         | M24   | 170.5 | 30 |
| 200 | 219.1 | 375 | 320 | 30 | 12        | M27   | 221.5 | 36 |
| 250 | 273   | 450 | 385 | 33 | 12        | M30   | 276.5 | 42 |
| 300 | 323.9 | 515 | 450 | 33 | 16        | M30   | 327.5 | 48 |
| 350 | 355.6 | 580 | 510 | 36 | 16        | M33   | 359.5 | 54 |
| 400 | 406.4 | 660 | 585 | 39 | 16        | M36   | 411   | 60 |
| 450 | 457   | 685 | 610 | 39 | 20        | M36   | 462   | 66 |
| 500 | 508   | 755 | 670 | 42 | 20        | M39   | 513.5 | 72 |



# RM Alkon Stahl

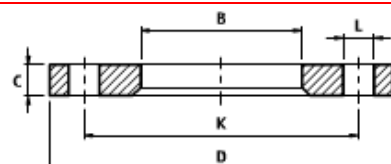
Stevana Brakusa 4, 11030 Beograd - tel.7540-847 \* fax.3055-488  
 e-mail: office@rmalkon.co.rs \* www.rmalkon.co.rs

## Prirubnice po EN 1092-1/02 tip A - Ravne prirubnice sa pripremom za zavar (sa zljebom)



EN 1092-1/02 type A PN 6

| DN  | Ø ISO | D   | K   | L  | Broj rupa | Vijci | B ISO | C  |
|-----|-------|-----|-----|----|-----------|-------|-------|----|
| 10  | 17.2  | 75  | 50  | 11 | 4         | M10   | 21    | 12 |
| 15  | 21.3  | 80  | 55  | 11 | 4         | M10   | 25    | 12 |
| 20  | 26.9  | 90  | 65  | 11 | 4         | M10   | 31    | 14 |
| 25  | 33.7  | 100 | 75  | 11 | 4         | M10   | 38    | 14 |
| 32  | 42.4  | 120 | 90  | 14 | 4         | M12   | 46    | 16 |
| 40  | 48.3  | 130 | 100 | 14 | 4         | M12   | 53    | 16 |
| 50  | 60.3  | 140 | 110 | 14 | 4         | M12   | 65    | 16 |
| 65  | 76.1  | 160 | 130 | 14 | 4         | M12   | 81    | 16 |
| 80  | 88.9  | 190 | 150 | 18 | 4         | M16   | 94    | 18 |
| 100 | 114.3 | 210 | 170 | 18 | 4         | M16   | 120   | 18 |
| 125 | 139.7 | 240 | 200 | 18 | 8         | M16   | 145   | 20 |
| 150 | 168.3 | 265 | 225 | 18 | 8         | M16   | 174   | 20 |
| 200 | 219.1 | 320 | 280 | 18 | 8         | M16   | 226   | 22 |
| 250 | 273   | 375 | 335 | 18 | 12        | M16   | 281   | 24 |
| 300 | 323.9 | 440 | 395 | 22 | 12        | M20   | 333   | 24 |
| 350 | 355.6 | 490 | 445 | 22 | 12        | M20   | 365   | 26 |
| 400 | 406.4 | 540 | 495 | 22 | 16        | M20   | 416   | 28 |
| 450 | 457   | 595 | 550 | 22 | 16        | M20   | 467   | 30 |
| 500 | 508   | 645 | 600 | 22 | 20        | M20   | 519   | 30 |



Flange piane scorrevoli - EN 1092-1/02 type A PN 10


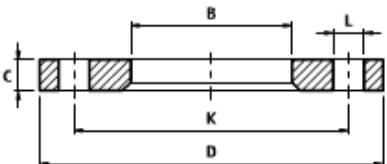
| DN  | Ø ISO | D   | K   | L  | Broj rupa | Vijci | B ISO | C  |
|---|-------|-----|-----|----|-----------|-------|-------|----|
| 10÷40                                       |       |     |     |    |           |       |       |    |
| Koristi EN 1092-1/02 tip A PN 40 prirubnice |       |     |     |    |           |       |       |    |
| 50÷150                                      |       |     |     |    |           |       |       |    |
| Koristi EN 1092-1/02 tip A PN 16 prirubnice |       |     |     |    |           |       |       |    |
| 200   | 219.1 | 340 | 295 | 22 | 8         | M20   | 226   | 24 |
| 250   | 273   | 395 | 350 | 22 | 12        | M20   | 281   | 26 |
| 300   | 323.9 | 445 | 400 | 22 | 12        | M20   | 333   | 26 |
| 350   | 355.6 | 505 | 460 | 22 | 16        | M20   | 365   | 28 |
| 400   | 406.4 | 565 | 515 | 26 | 16        | M24   | 416   | 32 |
| 450   | 457   | 615 | 565 | 26 | 20        | M24   | 467   | 36 |
| 500   | 508   | 670 | 620 | 26 | 20        | M24   | 519   | 38 |
| 600   | 610   | 780 | 725 | 30 | 20        | M27   | 622   | 42 |


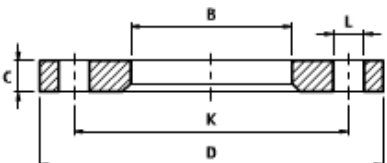


# RM Alkon Stahl

Stevana Brakusa 4, 11030 Beograd - tel.7540-847 \* fax.3055-488

e-mail: office@rmalkon.co.rs \* www.rmalkon.co.rs

| DN   | Ø ISO                                       | D   | K   | L  | Broj rupa | Vijci | B ISO | C  |
|--|---|-----|-----|----|-----------|-------|-------|----|
|   |   |     |     |    |           |       |       |    |
| <b>Flange plane scorrevoli - EN 1092-1/02 type A PN 16</b>   |   |     |     |    |           |       |       |    |
| 10÷40  | Koristi EN 1092-1/02 tip A PN 40 prirubnice |     |     |    |           |       |       |    |
| 50   | 60.3  | 165 | 125 | 18 | 4         | M16   | 65    | 19 |
| 65   | 76.1  | 185 | 145 | 18 | 8         | M16   | 81    | 20 |
| 80   | 88.9  | 200 | 160 | 18 | 8         | M16   | 94    | 20 |
| 100  | 114.3                                       | 220 | 180 | 18 | 8         | M16   | 120   | 22 |
| 125  | 139.7                                       | 250 | 210 | 18 | 8         | M16   | 145   | 22 |
| 150  | 168.3                                       | 285 | 240 | 22 | 8         | M20   | 174   | 24 |
| 200  | 219.1                                       | 340 | 295 | 22 | 12        | M20   | 226   | 26 |
| 250  | 273   | 405 | 355 | 26 | 12        | M24   | 281   | 29 |
| 300  | 323.9                                       | 460 | 410 | 26 | 12        | M24   | 333   | 32 |
| 350  | 355.6                                       | 520 | 470 | 26 | 16        | M24   | 365   | 35 |
| 400  | 406.4                                       | 580 | 525 | 30 | 16        | M27   | 416   | 38 |
| 450  | 457   | 640 | 585 | 30 | 20        | M27   | 467   | 42 |
| 500  | 508   | 715 | 650 | 33 | 20        | M30   | 510   | 46 |
| 600  | 610   | 840 | 770 | 36 | 20        | M33   | 622   | 52 |

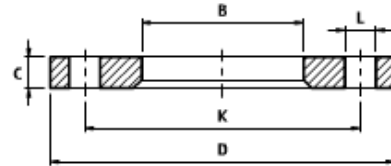
| DN   | Ø ISO                                       | D   | K   | L  | Broj rupa | Vijci | B ISO | C  |
|--|---|-----|-----|----|-----------|-------|-------|----|
|   |   |     |     |    |           |       |       |    |
| <b>Flange plane scorrevoli - EN 1092-1/02 type A PN 25</b>   |   |     |     |    |           |       |       |    |
| 10÷150   | Koristi EN 1092-1/02 tip A PN 40 prirubnice |     |     |    |           |       |       |    |
| 200  | 219.1                                       | 360 | 310 | 26 | 12        | M24   | 226   | 32 |
| 250  | 273   | 425 | 370 | 30 | 12        | M27   | 281   | 35 |
| 300  | 323.9                                       | 485 | 430 | 30 | 16        | M27   | 333   | 38 |
| 350  | 355.6                                       | 555 | 490 | 33 | 16        | M30   | 365   | 42 |
| 400  | 406.4                                       | 620 | 550 | 36 | 16        | M33   | 416   | 46 |
| 450  | 457   | 670 | 600 | 36 | 20        | M33   | 467   | 50 |
| 500  | 508   | 730 | 660 | 36 | 20        | M33   | 519   | 56 |
| 600  | 610   | 845 | 770 | 39 | 20        | M36   | 622   | 68 |



# RM Alkon Stahl

Stevana Brakusa 4, 11030 Beograd - tel.7540-847 \* fax.3055-488

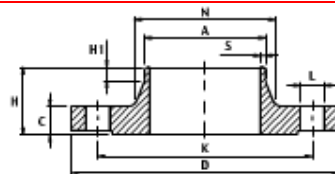
e-mail: office@rmalkon.co.rs \* www.rmalkon.co.rs



Flange piane scorrevoli - EN 1092-1/02 type A PN 40

| DN  | Ø ISO | D   | K   | L  | Broj rupa | Vijci | B ISO | C  |
|-----|-------|-----|-----|----|-----------|-------|-------|----|
| 10  | 17.2  | 90  | 60  | 14 | 4         | M12   | 21    | 14 |
| 15  | 21.3  | 95  | 65  | 14 | 4         | M12   | 25    | 14 |
| 20  | 26.9  | 105 | 75  | 14 | 4         | M12   | 31    | 16 |
| 25  | 33.7  | 115 | 85  | 14 | 4         | M12   | 38    | 16 |
| 32  | 42.4  | 140 | 100 | 18 | 4         | M16   | 47    | 18 |
| 40  | 48.3  | 150 | 110 | 18 | 4         | M16   | 53    | 18 |
| 50  | 60.3  | 165 | 125 | 18 | 4         | M16   | 65    | 20 |
| 65  | 76.1  | 185 | 145 | 18 | 8         | M16   | 81    | 22 |
| 80  | 88.9  | 200 | 160 | 18 | 8         | M16   | 94    | 24 |
| 100 | 114.3 | 235 | 190 | 22 | 8         | M20   | 120   | 26 |
| 125 | 139.7 | 270 | 220 | 26 | 8         | M24   | 145   | 28 |
| 150 | 168.3 | 300 | 250 | 26 | 8         | M24   | 174   | 30 |
| 200 | 219.1 | 375 | 320 | 30 | 12        | M27   | 226   | 36 |
| 250 | 273   | 450 | 385 | 33 | 12        | M30   | 281   | 42 |
| 300 | 323.9 | 515 | 450 | 33 | 16        | M30   | 333   | 48 |
| 350 | 355.6 | 580 | 510 | 36 | 16        | M33   | 365   | 54 |
| 400 | 406.4 | 660 | 585 | 39 | 16        | M36   | 416   | 60 |
| 450 | 457   | 685 | 610 | 39 | 20        | M36   | 467   | 66 |
| 500 | 508   | 755 | 670 | 42 | 20        | M39   | 519   | 72 |

Prirubnice sa grlom DIN 2633 PN 16



DIN 2633 PN 16

| DN  | Ø ISO | D   | K   | L  | Broj rupa<br>N° | Vijci | A ISO | C  | H  | H1 | N   | S   |
|-----|-------|-----|-----|----|-----------------|-------|-------|----|----|----|-----|-----|
| 10  | 17.2  | 90  | 60  | 14 | 4               | M12   | 17.2  | 14 | 35 | 6  | 28  | 1.8 |
| 15  | 21.3  | 95  | 65  | 14 | 4               | M12   | 21.3  | 14 | 35 | 6  | 32  | 2   |
| 20  | 26.9  | 105 | 75  | 14 | 4               | M12   | 26.9  | 16 | 38 | 6  | 40  | 2.3 |
| 25  | 33.7  | 115 | 85  | 14 | 4               | M12   | 33.7  | 16 | 38 | 6  | 45  | 2.6 |
| 32  | 42.4  | 140 | 100 | 18 | 4               | M16   | 42.4  | 16 | 40 | 6  | 56  | 2.6 |
| 40  | 48.3  | 150 | 110 | 18 | 4               | M16   | 48.3  | 16 | 42 | 7  | 64  | 2.6 |
| 50  | 60.3  | 165 | 125 | 18 | 4               | M16   | 60.3  | 18 | 45 | 8  | 75  | 2.9 |
| 65  | 76.1  | 185 | 145 | 18 | 4               | M16   | 76.1  | 18 | 45 | 10 | 90  | 2.9 |
| 80  | 88.9  | 200 | 160 | 18 | 8               | M16   | 88.9  | 20 | 50 | 10 | 105 | 3.2 |
| 100 | 114.3 | 220 | 180 | 18 | 8               | M16   | 114.3 | 20 | 52 | 12 | 131 | 3.6 |
| 125 | 139.7 | 250 | 210 | 18 | 8               | M16   | 139.7 | 22 | 55 | 12 | 156 | 4   |
| 150 | 168.3 | 285 | 240 | 22 | 8               | M20   | 168.3 | 22 | 55 | 12 | 184 | 4.5 |
| 200 | 219.1 | 340 | 295 | 22 | 12              | M20   | 219.1 | 24 | 62 | 16 | 235 | 5.9 |

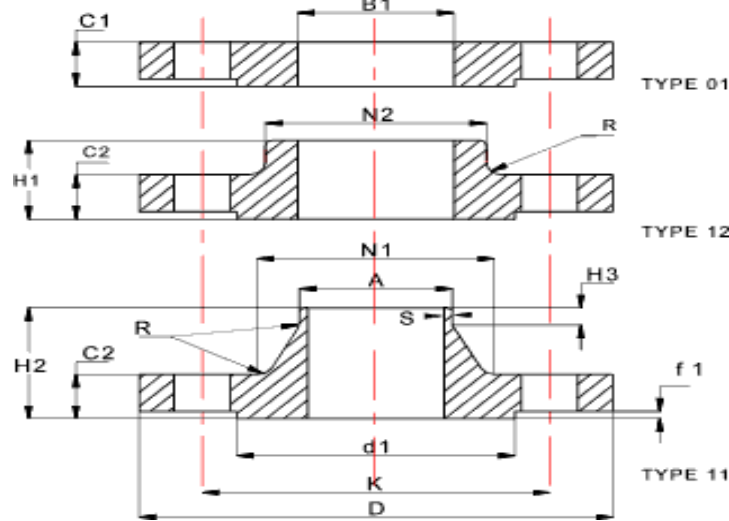
Prirubnice sa grlom EN 1092-1 tip B



EN 1092-1 tip B

| DN  | Ø ISO | D   | K   | L  | Broj rupa<br>N° | Vijci | A ISO | C  | H  | H1 | N   | S   |
|-----|-------|-----|-----|----|-----------------|-------|-------|----|----|----|-----|-----|
| 10  | 17.2  | 90  | 60  | 14 | 4               | M12   | 17.2  | 14 | 35 | 6  | 28  | 1.8 |
| 15  | 21.3  | 95  | 65  | 14 | 4               | M12   | 21.3  | 14 | 35 | 6  | 32  | 2   |
| 20  | 26.9  | 105 | 75  | 14 | 4               | M12   | 26.9  | 14 | 38 | 6  | 39  | 2.3 |
| 25  | 33.7  | 115 | 85  | 14 | 4               | M12   | 33.7  | 16 | 38 | 6  | 46  | 2.6 |
| 32  | 42.4  | 140 | 100 | 18 | 4               | M16   | 42.4  | 16 | 40 | 6  | 56  | 2.6 |
| 40  | 48.3  | 150 | 110 | 18 | 4               | M16   | 48.3  | 16 | 42 | 7  | 64  | 2.6 |
| 50  | 60.3  | 165 | 125 | 18 | 4               | M16   | 60.3  | 18 | 45 | 8  | 75  | 2.9 |
| 65  | 76.1  | 185 | 145 | 18 | 4               | M16   | 76.1  | 18 | 45 | 10 | 90  | 2.9 |
| 80  | 88.9  | 200 | 160 | 18 | 8               | M16   | 88.9  | 20 | 50 | 10 | 105 | 3.2 |
| 100 | 114.3 | 220 | 180 | 18 | 8               | M16   | 114.3 | 20 | 52 | 12 | 131 | 3.6 |
| 125 | 139.7 | 250 | 210 | 18 | 8               | M16   | 139.7 | 22 | 55 | 12 | 156 | 4   |
| 150 | 168.3 | 285 | 240 | 22 | 8               | M20   | 168.3 | 22 | 55 | 12 | 192 | 4.5 |
| 200 | 219.1 | 340 | 295 | 22 | 12              | M20   | 219.1 | 24 | 62 | 16 | 235 | 5.6 |

**BS EN 1092-1 PN 16 Dimenzije**



**Povezivanje vijcima**

K = Oso rastojanje naspramnih rupa L = precnik rupe,  
No = Broj rupa, Size = dimenzija vijjka

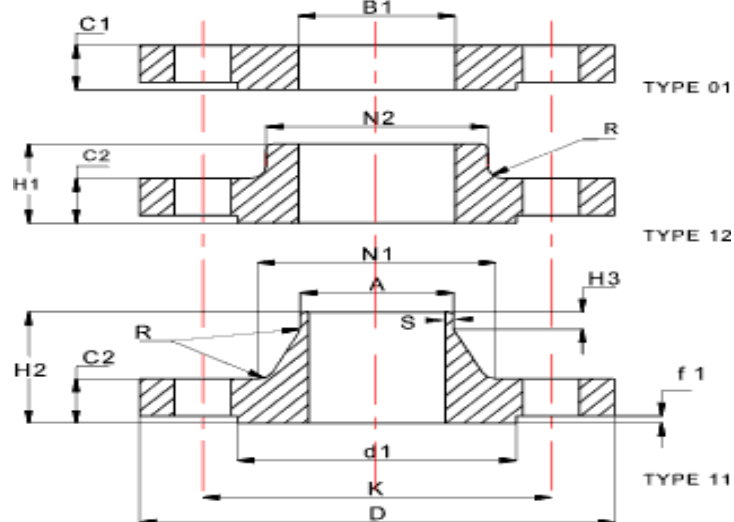
| DN  | K   | L  | No | Size |
|-----|-----|----|----|------|
| mm  | mm  | mm | -  | mm   |
| 10  | 60  | 14 | 4  | M12  |
| 15  | 65  | 14 | 4  | M12  |
| 20  | 75  | 14 | 4  | M12  |
| 25  | 85  | 14 | 4  | M12  |
| 32  | 100 | 18 | 4  | M16  |
| 40  | 110 | 18 | 4  | M16  |
| 50  | 125 | 18 | 4  | M16  |
| 65  | 145 | 18 | 8  | M16  |
| 80  | 160 | 18 | 8  | M16  |
| 100 | 180 | 18 | 8  | M16  |
| 125 | 210 | 18 | 8  | M16  |
| 150 | 240 | 22 | 8  | M20  |
| 200 | 295 | 22 | 12 | M20  |
| DN  | K   | L  | No | Size |

Note : All Dimensions in mm

| DN  | D   | C1 | C2 | H1 | H2 | H3 | R  | A     | N1  | N2  | B1    | d1  | f1 | S   |
|-----|-----|----|----|----|----|----|----|-------|-----|-----|-------|-----|----|-----|
| 10  | 90  | 14 | 14 | 20 | 35 | 6  | 4  | 17,2  | 28  | 30  | 18    | 40  | 2  | 1,8 |
| 15  | 95  | 14 | 14 | 20 | 35 | 6  | 4  | 21,3  | 32  | 35  | 22    | 45  | 2  | 2,0 |
| 20  | 105 | 14 | 14 | 24 | 38 | 6  | 4  | 26,9  | 39  | 45  | 27,5  | 58  | 2  | 2,3 |
| 25  | 115 | 16 | 16 | 24 | 38 | 6  | 4  | 33,7  | 46  | 52  | 34,5  | 68  | 2  | 2,6 |
| 32  | 140 | 18 | 16 | 26 | 40 | 6  | 6  | 42,4  | 56  | 60  | 43,5  | 78  | 2  | 2,6 |
| 40  | 150 | 18 | 16 | 26 | 42 | 7  | 6  | 48,3  | 64  | 70  | 49,5  | 88  | 2  | 2,6 |
| 50  | 165 | 19 | 18 | 28 | 45 | 8  | 6  | 60,3  | 75  | 84  | 61,5  | 102 | 2  | 2,9 |
| 65  | 185 | 20 | 18 | 32 | 45 | 10 | 6  | 76,1  | 90  | 104 | 77,5  | 122 | 2  | 2,9 |
| 80  | 200 | 20 | 20 | 34 | 50 | 10 | 8  | 88,9  | 105 | 118 | 90,5  | 138 | 2  | 3,2 |
| 100 | 220 | 22 | 20 | 40 | 52 | 12 | 8  | 114,3 | 131 | 140 | 116   | 158 | 2  | 3,6 |
| 125 | 250 | 22 | 22 | 44 | 55 | 12 | 8  | 139,7 | 156 | 168 | 141,5 | 188 | 2  | 4,0 |
| 150 | 285 | 24 | 22 | 44 | 55 | 12 | 10 | 168,3 | 192 | 195 | 170,5 | 212 | 2  | 4,5 |
| 200 | 340 | 26 | 24 | 44 | 62 | 16 | 10 | 219,1 | 235 | 246 | 221,5 | 268 | 2  | 5,6 |
| DN  | D   | C1 | C2 | H1 | H2 | H3 | R  | A     | N1  | N2  | B1    | d1  | f1 | S   |



## BS EN 1092-1 PN 16 Dimenzije



## Povezivanje vijcima

K = Osnovno rastojanje naspramnih rupa L = prečnik rupe,  
No = Broj rupa, Size = dimenzija vijka

| DN   | K    | L  | No | Size |
|------|------|----|----|------|
| 250  | 355  | 26 | 12 | M24  |
| 300  | 410  | 26 | 12 | M24  |
| 350  | 470  | 26 | 16 | M24  |
| 400  | 525  | 30 | 16 | M27  |
| 450  | 585  | 30 | 20 | M27  |
| 500  | 650  | 33 | 20 | M30  |
| 600  | 770  | 36 | 20 | M33  |
| 700  | 840  | 36 | 24 | M33  |
| 800  | 950  | 39 | 24 | M36  |
| 900  | 1050 | 39 | 28 | M36  |
| 1000 | 1170 | 42 | 28 | M39  |
| 1200 | 1390 | 48 | 32 | M45  |
| 1400 | 1590 | 48 | 36 | M45  |
| 1600 | 1820 | 56 | 40 | M52  |
| DN   | K    | L  | No | Size |

| DN   | D    | C1 | C2 | H1  | H2  | H3 | R  | A      | N1   | N2   | B1    | d1   | f1 | S    |
|------|------|----|----|-----|-----|----|----|--------|------|------|-------|------|----|------|
| 250  | 405  | 29 | 26 | 46  | 70  | 16 | 12 | 273    | 292  | 298  | 276,5 | 320  | 2  | 6,3  |
| 300  | 460  | 32 | 28 | 46  | 78  | 16 | 12 | 323,9  | 344  | 350  | 327,5 | 378  | 2  | 7,1  |
| 350  | 520  | 35 | 30 | 57  | 82  | 16 | 12 | 355,6  | 390  | 400  | 359   | 438  | 2  | 8,0  |
| 400  | 580  | 38 | 32 | 63  | 85  | 16 | 12 | 406,4  | 445  | 456  | 411,0 | 490  | 2  | 8,0  |
| 450  | 640  | 42 | 40 | 68  | 87  | 16 | 12 | 457,0  | 490  | 502  | 462,0 | 550  | 2  | 8,0  |
| 500  | 715  | 46 | 44 | 73  | 90  | 16 | 12 | 508,0  | 548  | 559  | 513,5 | 610  | 2  | 8,0  |
| 600  | 840  | 52 | 54 | 83  | 95  | 18 | 12 | 610,0  | 652  | 658  | 616,5 | 725  | 2  | 8,8  |
| 700  | 910  | -  | 36 | 83  | 100 | 18 | 12 | 711,0  | 755  | 760  | -     | 795  | 2  | 8,8  |
| 800  | 1025 | -  | 38 | 90  | 105 | 20 | 12 | 813,0  | 855  | 864  | -     | 900  | 2  | 10,0 |
| 900  | 1125 | -  | 40 | 94  | 110 | 20 | 12 | 914,0  | 955  | 968  | -     | 1000 | 2  | 10,0 |
| 1000 | 1255 | -  | 42 | 100 | 120 | 22 | 16 | 1016,0 | 1058 | 1072 | -     | 1115 | 2  | 10,0 |
| 1200 | 1485 | -  | 48 | -   | 130 | 30 | 16 | 1219,0 | 1262 | -    | -     | 1330 | 2  | 12,5 |
| 1400 | 1685 | -  | 52 | -   | 145 | 30 | 16 | 1420,0 | 1465 | -    | -     | 1530 | 2  | 14,2 |
| 1600 | 1930 | -  | 58 | -   | 160 | 35 | 16 | 1620,0 | 1668 | -    | -     | 1750 | 2  | 16,0 |
| DN   | D    | C1 | C2 | H1  | H2  | H3 | R  | A      | N1   | N2   | B1    | d1   | f1 | S    |

Note: in BS EN 1092-1:2002 f1= 2 for all sizes.

In the latest versions of the relevant DIN standard. f1 varies as follow

(DN =< 32 f1 = 1-2, DN 32->250(inc) f1= 1-3, DN 250->500(inc) f1= 1-4, Dn >500 f1= 1-5 )..